



CIFELLOWS PROGRAM

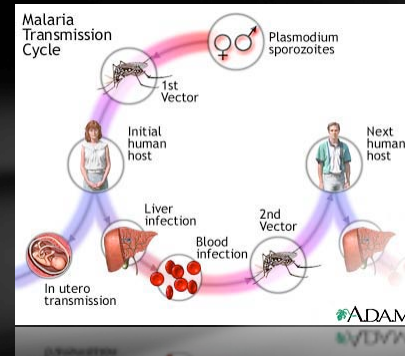
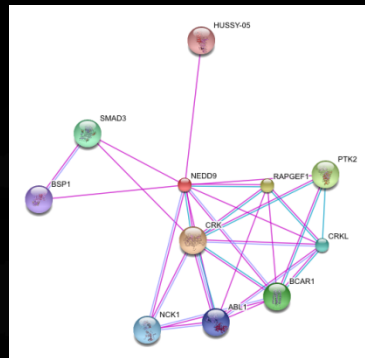
ANTONINA MITROFANOVA

PostDoctoral CIFellow (CRA, CCC, NSF)

Columbia University

MY STORY

– PhD student in computer science at NYU, Courant Institute, with Bud Mishra



Predicting protein
protein

complexes from noisy
for

data
malaria parasite

Predicting functions for

proteins isolated in their

own network

Predicting

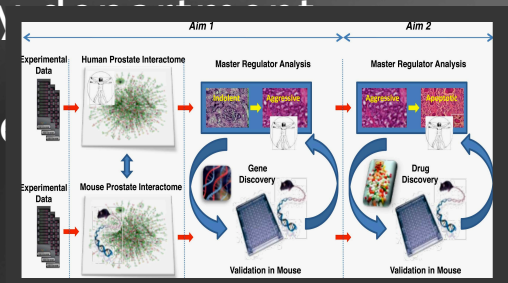
classification

MY STORY



-In April 2009, I interviewed for Postdoctoral and
positions in NY
-I chose Columbia University, dep. of
Biomedical Informatics
(with Prof. Andrea Califano, a leading
scientist in this field)

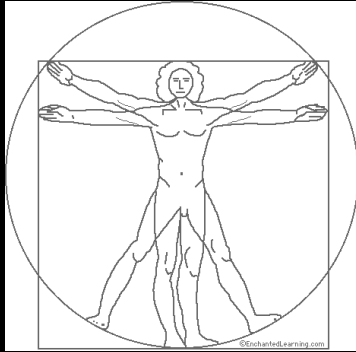
-In May, 2009 I received an e-mail from my
head about
the CIFellow and applied, listing Andre
adviser



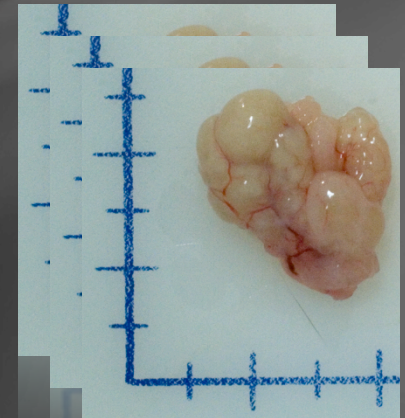
WHAT WAS IMPORTANT?

- My passion about the proposed research
 - you should not be afraid to show passion about your research
- How realistic my proposed research was : specific goals, tools and approaches
 - be specific
- Close collaboration with my proposed adviser
 - Do not prepare your application in isolation – talk to your proposed adviser, communicate to him your ideas, ask advice!

MY RESEARCH: PROSTATE

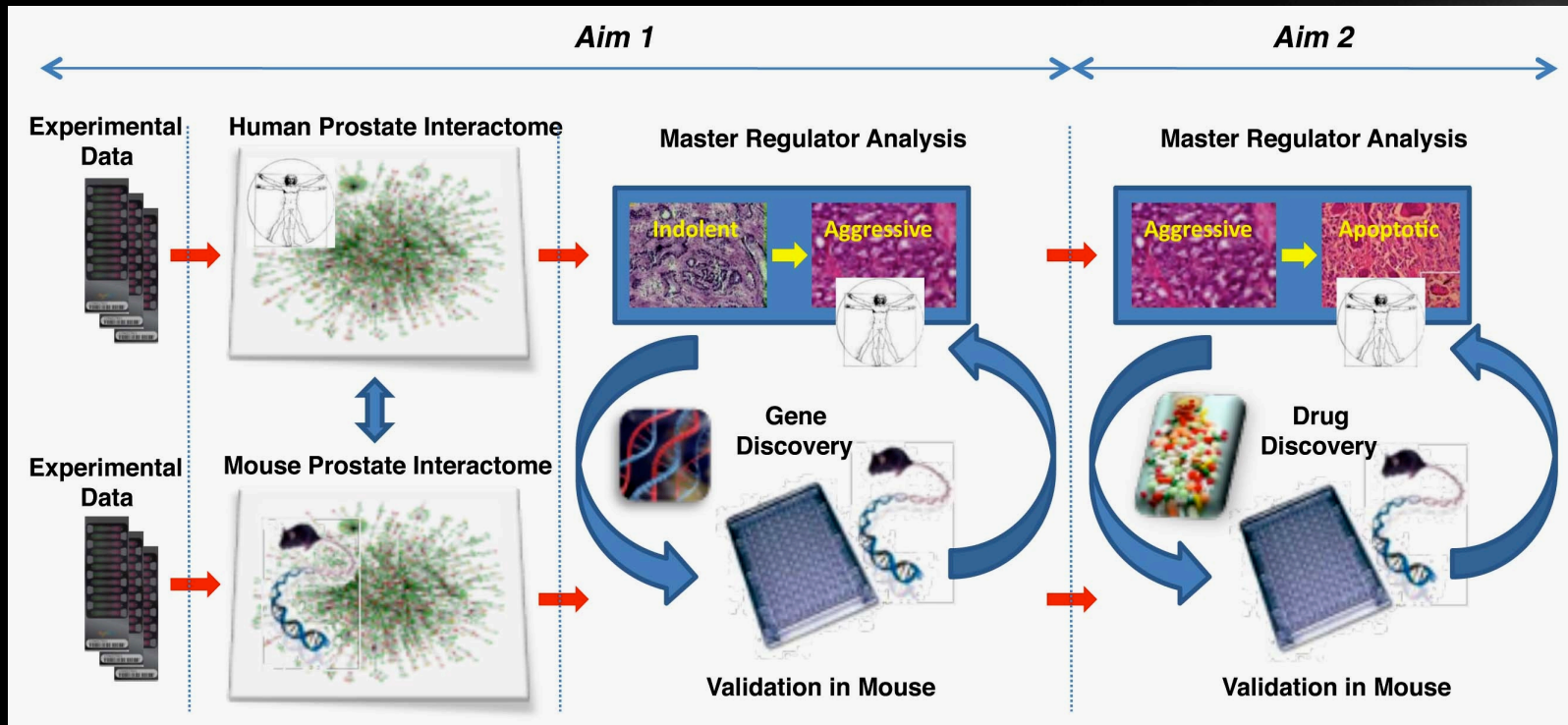


Collaborators:
Cory Abate-Shen and Michael Shen



PROJECT OVERVIEW

A “human-to-mouse-to-human” discovery approach

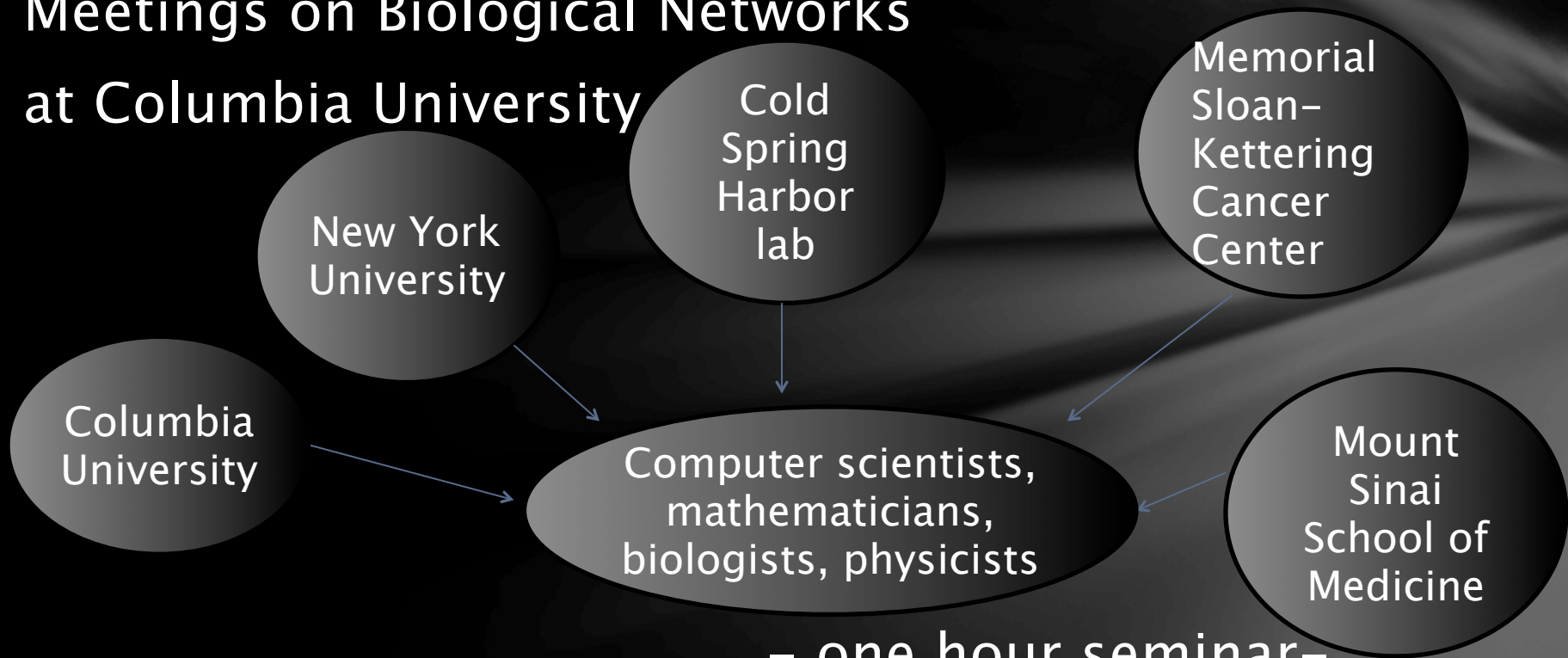


MY LAB



ADDITIONAL ACTIVITIES

Meetings on Biological Networks
at Columbia University



- one hour seminar-

style talk

- informal discussion and

WHAT IS CIFELLOW FOR ME?

- CIFellow is not a regular postdoc: it is an extremely prestigious fellowship that offers a very competitive salary, accompanied with travel and relocation funds
- It supports the most promising graduates in times of economic difficulties, encouraging new PhDs to stay in academia
- I would call CIFellow a "young scientist" fellowship as opposed to a "postdoc" fellowship: since you have a lot of freedom and independence
- Freedom of research, supervising students, attending