

Data Science For Social Good

Taylor Martin

National Science Foundation



- DSFSG
- The Promise
- Challenges
- Conclusions



Data Science for poverty alleviation

- Approximately 70% of the global population in poverty in rural areas
 - International Fund for Agricultural Development
- Shocks
 - disease
 - war or conflict
 - failed crops or natural disasters.
- Unconditional cash transfer programs
 - Can allow people to take advantage of opportunities that require some investment but can then lift the household or village back out of poverty

Operating Model

We manage transfers end-to-end using electronic monitoring and payment technology.

Overview [Kenya](#) [Uganda](#)

Key stats



We first locate extremely poor communities using publicly available data. We then send field staff door-to-door to digitally collect data on poverty and enroll recipients. We typically target those living in homes made out of organic materials, and are also assessing alternative poverty targeting methods.



We use a set of independent checks to verify that recipients are eligible and did not pay bribes, such as physical back-checks, image verification, phone checks, and data consistency checks. For example, we use GPS coordinates, satellite imagery, and crowdsourced labor to detect irregularities.



We transfer recipient households roughly \$1,000, or around one year's budget for a typical household. We use electronic payment systems; typically, recipients receive an SMS alert and then collect cash from a mobile money agent in their village or nearest town.

\$0.65

The average recipient in Kenya lives on just 65 cents (nominal) per day.



3% of households are removed from our lists after multiple checks of their eligibility. [Verify this \[csv\]](#)

31 min

On average it takes recipients 31 minutes round-trip to collect their transfers from the closest agent.

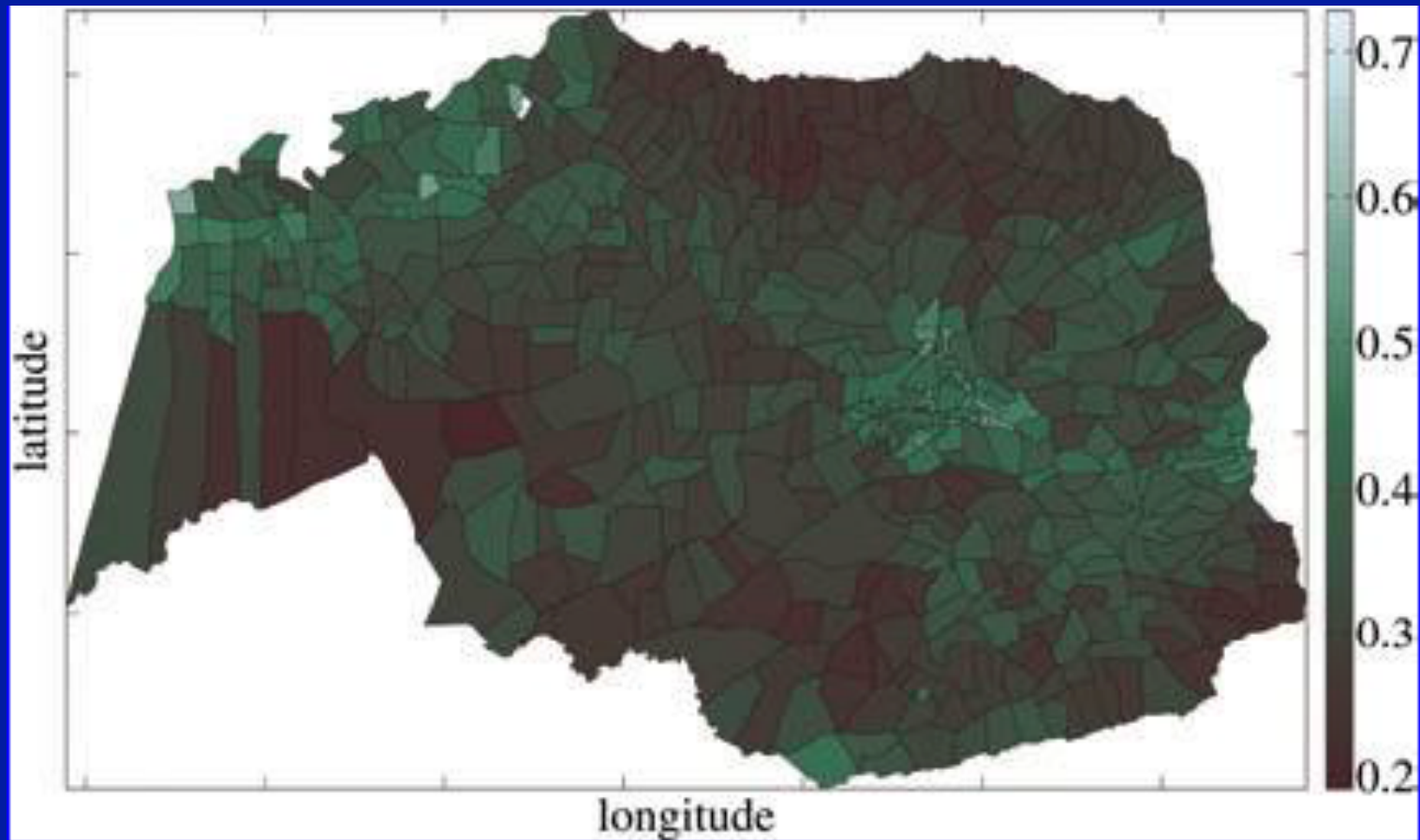
[Verify this \[csv\]](#)

Satellite image patches (a) thatched roofs (b) metal roof



Varshney et al., 2015

Estimated proportion metal roofs per village



Varshney et al., 2015



Find tacos, cheap dinner, Max's

Near Washington, DC



Sign Up

Log In

Home

About Me

Write a Review

Find Friends

Messages

Talk

Events

South Street Steaks

★★★★☆ 132 reviews

Details

★ Write a Review

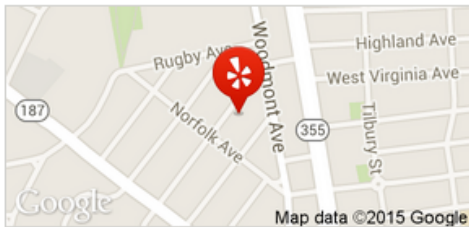
📷 Add Photo

➦ Share

🔖 Bookmark

\$ · Sandwiches, Cheesesteaks, American (New)

Edit



4856 Cordell Ave
Bethesda, MD 20814

Edit

Get Directions

🚗 Bethesda Metro More info

☎ (301) 215-8333

✉ Message the business

🌐 southstreetsteaks.com



See all 60 photos



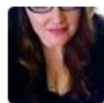
"The steaks are juicy, the whiz is solid, the onion amount is perfect and the **Amoroso rolls** are, well, Amoroso rolls." in 11 reviews



"I recommend their **Steel City**, The Works, and Chicken cheese steak." in 5 reviews



"The **cheez whiz** is a good condiment -- whether it's on the fries or in the subs!" in 6 reviews



Ad **Angie's Pizza** ★★★★★ 27 reviews



Rachel E. said "Such good food. Like insanely good food. The pizza is good. The subs are good. Fresh quality ingredients. I just tried the chicken pesto pizza and it was heavenly. My husband and I order from here quite..." [read more](#)

🚚 Order delivery or pickup

This business opens **Saturday at 11:00 am**

☐ Pickup

☒ Enter your delivery address

1 Yelp St., San Francisco, CA 94105

Start Order



Today 11:00 am - 3:00 am
Closed now



Full menu



Price range Under \$10

Cases

- Data collection is thin
- Data collection is unobtrusive
 - Discover what could be very personal information from non-personal data
- Approach
 - narrow down using Big Data methods
 - follow up with human eyes

Promising Efforts in Education

- Personalized Learning
- No More Tests
- Access to Learning Opportunities

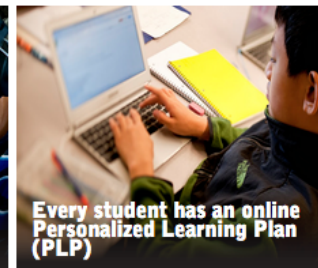
Personalized Learning



Explore a day in the life of a Summit student.

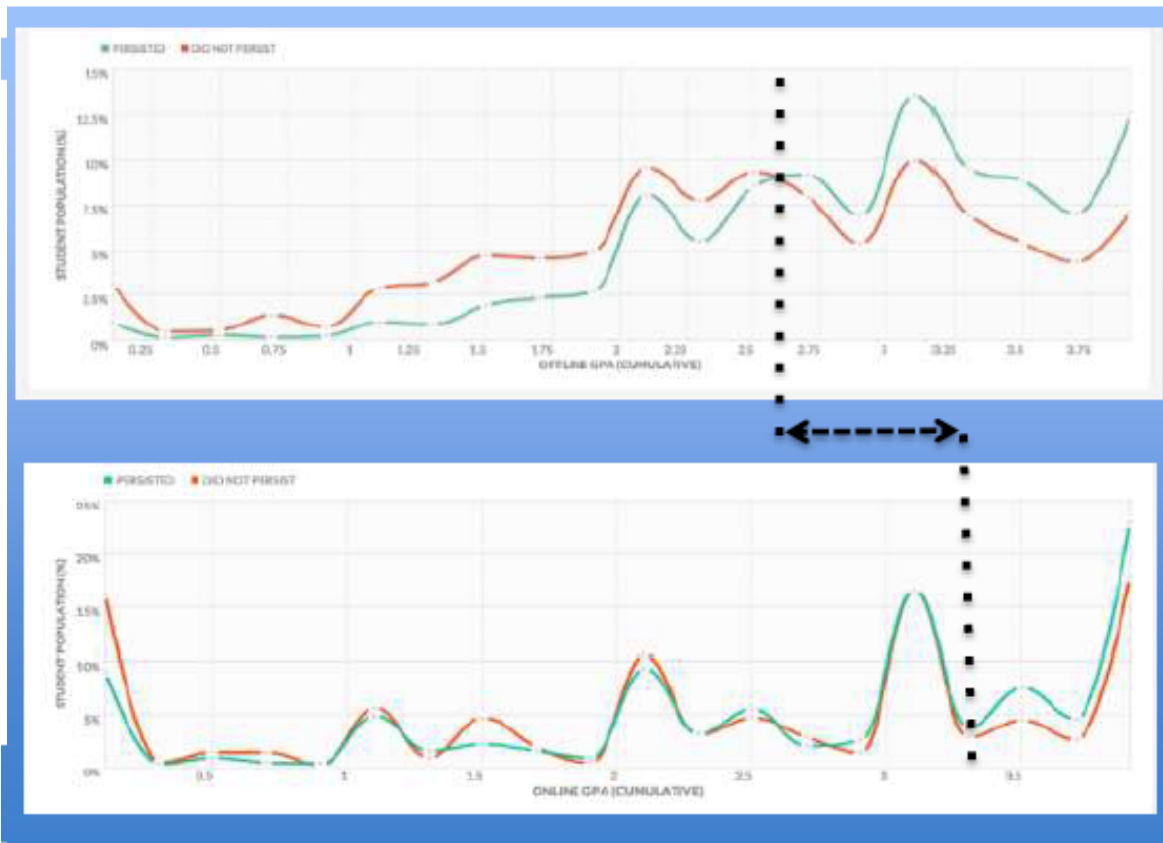
Each Summit school has its own daily schedule, but all share the same core learning experiences focused on college and career readiness.

School Day BeginsMid-Day.....School Day EndsFour 2-Week Sessions.....





Institution Insight: When looking at **GPA by modality** we see that the tipping point moves significantly higher for online courses



On Ground = 2.6

Online = 3.4



No More Tests



```
110100101001011
110101000101101
001001001001001
010100101010101
011010010010010
101010110001010
100100101000101
```

Data Specification

[🔗 Fork on GitHub](#)

The base of the ADAGE platform is the data specification. The specification provides base structures for how ADAGE client games should log data to an ADAGE server. This gives a common structure to the data that allows generic analysis tools and cross game comparison of data. ADAGE client games can extend this base specification to record data that is entirely specific to the game.



ADAGE Unity Client

[🔗 Documentation](#)[🔗 Fork on GitHub](#)

The ADAGE client for Unity 3D is a package that can be dropped into your Unity projects to quickly start logging data to an ADAGE server. The current ADAGE Unity client is downloadable from GitHub. To be notified about new releases of the ADAGE Unity Client please join our mailing list or follow the repo on GitHub.



Server

[🔗 Documentation](#)[🔗 Fork on GitHub](#)

The ADAGE server is a Ruby on Rails application that provides support for logging, retrieving and analyzing data from ADAGE clients.

[HOW IT WORKS](#)[COURSES](#)[SCHOOLS & PARTNERS](#)[REGISTER](#)[SIGN IN](#)

Schools and Partners

[edX Charter Members](#)[edX Members](#)

EdX offers the highest quality courses from institutions who share our commitment to excellence in teaching and learning.

500+

courses in subjects such as humanities, math,
computer science

1,200+

faculty and staff teaching courses and discussing
topics online

400,000+

certificates proudly earned by edX students

[Subjects](#) ▾[Log in](#)

You only have to know one thing:
You can learn anything

For free. For everyone. Forever.

[Sign in](#) | [Contact the OU](#) | [Accessibility](#)[Search the OU](#)[Courses](#) [Postgraduate](#) [Research](#) [About](#) [News & media](#) [Employers](#)

Be inspired by our courses

The Open University provides high-quality distance learning for all, so join our millions of students who have already begun their life-changing journey.

[Browse A-Z of courses](#)

Or see [postgraduate](#).

Open Learning Opportunities

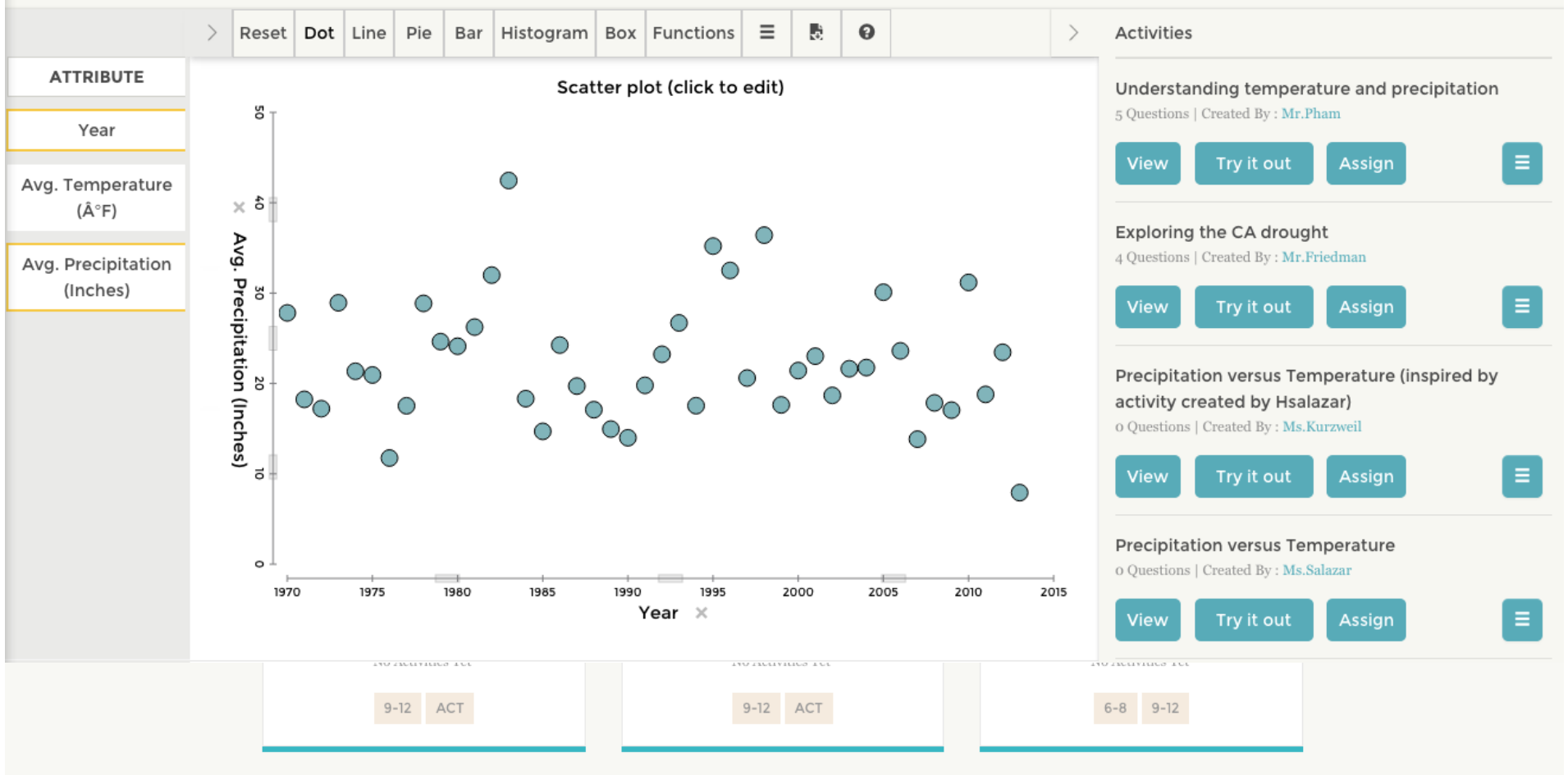
- More inquiry or collaborative learning practices
- More adaptivity
- More recommendation in real time and feedback to learners

Challenges

- D3M
- Data Privacy and Security
- Building Human Capacity

D3M

- D3M increasingly important in nearly all fields
- In education, challenges:
 - few integrated data sources
 - not enough knowledge sharing about the data that are available.
- Need tools to build human capacity for
 - teachers
 - administrators
 - Students
- Great things going on in building data literacy





↓ CUSTOMIZE VIEW

Dashboard

[Add a student](#)

- Students
- Assessments
- Account
- Refer a Friend
- Our Kiva
- Worksheet
- Help Center
- Getting Started
- Tips & Tricks
- Lessons
- Getting Started
- Setting Up
- Assignments
- Adding

			ATTENDANCE / DISCIPLINE		ASSESSMENTS		GRADES	
Student	Designations	Grade Level	YTD Attendance	School Violations	Reading DCAS	Math DCAS	Class Grades Failing	Grades C or Below
# Students Meeting Goal			34 of 34	33 of 34	12 of 34	6 of 34	16 of 34	5 of 34
			96.1 %	0 <>	782	774	0 <>	0
			99.0 %	0 <>	752	766	0 <>	3
			100.0 %	1 <>	655	674	0 ▲	3
			100.0 %	0 <>	672 A	761 A	1 ▼	2
			100.0 %	1 <>	786 A	733 A	1 <>	4
			100.0 %	0 <>	646	775	4 <>	4
			100.0 %	0 <>	683	801	2 ▼	4
			100.0 %	0 <>	711 A	790 A	3 ▼	4

Follow Us



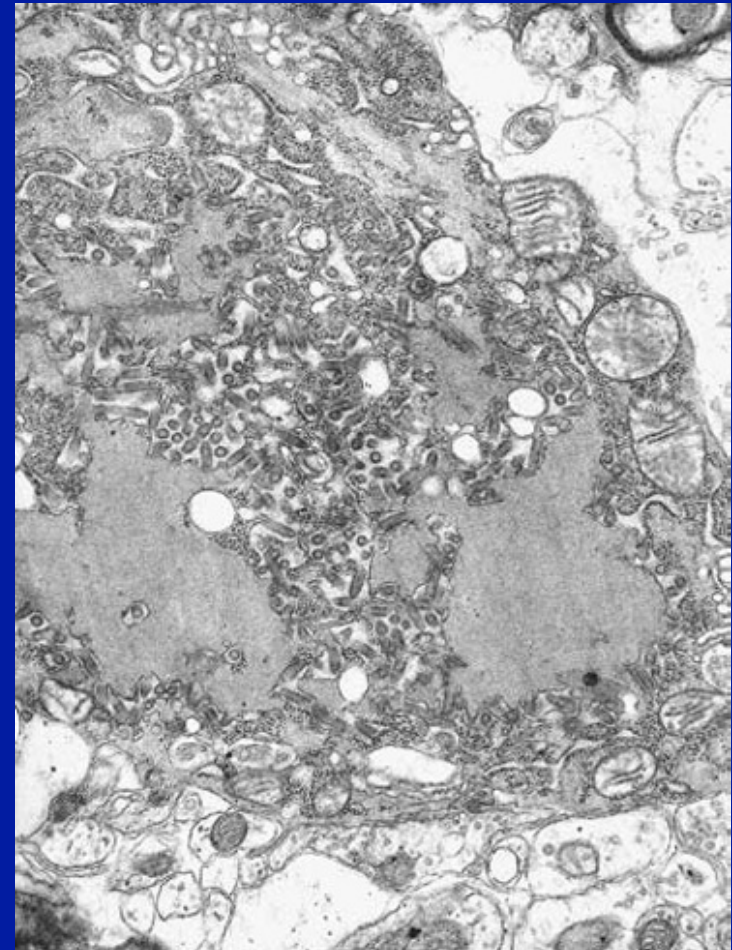
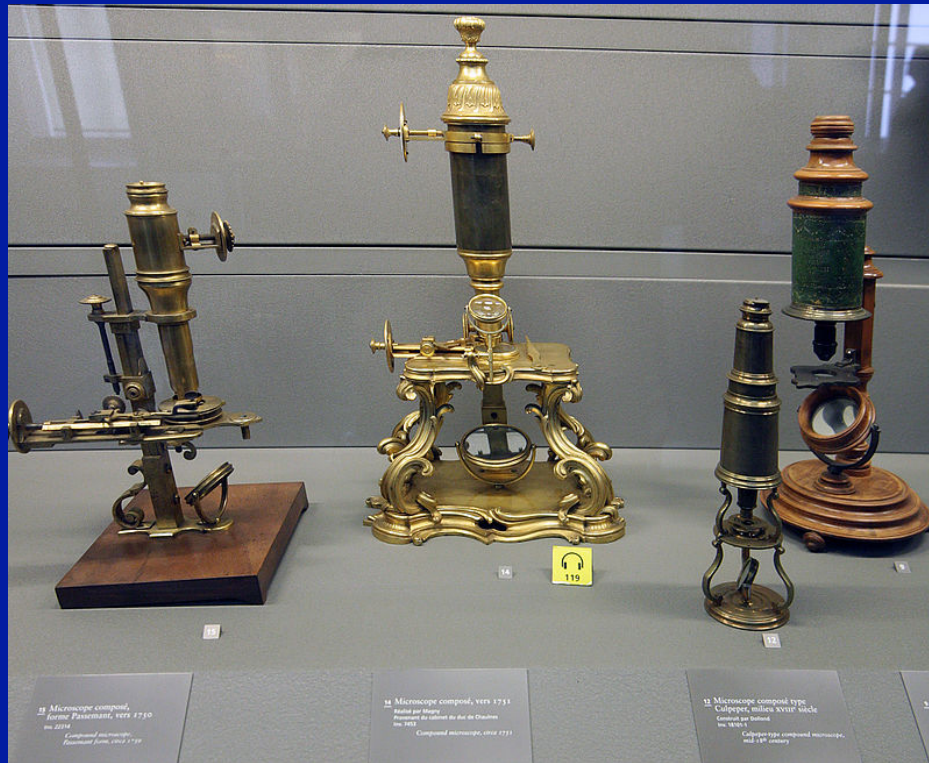
Log Student In >





Building Big Data Human Capacity

- The End of Theory: The Data Deluge Makes the Scientific Method Obsolete
 - Anderson
- The Unreasonable effectiveness of data
 - Halevy, Norvig, & Pereira
- Machine Learning for Hackers
 - “You don’t need a degree in statistics to know that we human beings will easily find shapes in clouds after looking at them for only a few seconds.”



Conclusions

- Hurry Up!
- Do it right

Because most people stop at the Z...

