

# The Modeling & Simulation Behind Improving Everyday Life

Tom Lange  
Director,  
Modeling &  
Simulation  
Corporate R&D



The power to transform.



# Investors Know P&G ...

- Large, Global, & Successful Consumer Goods Company
  - Sales: \$82.6 Billion FY June 30<sup>th</sup>, 2011
  - Net Earnings: \$11.8 Billion
  - 4.2 billion Consumers purchase a P&G product about 40 Billion Times a year.
- Builds lasting shareholder value
  - P&G has paid Dividends (Without Interruption) Since 1890
  - 55 consecutive years of Increasing Dividend Payments at a annual compound average rate of ~ 9.5%
  - Market Cap ~ 181 billion COB 2/12012
- Innovates to Grow:
  - Invest about \$2 Billion/yr in R&D...



The power to transform.

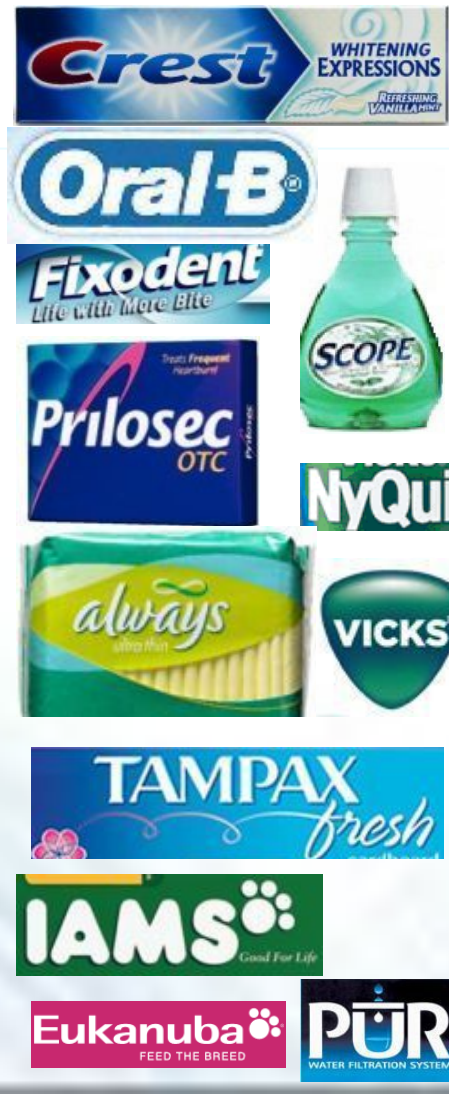


# Consumers ... Know Us by Brands

## Beauty & Grooming



## Health & Well-Being



## Household Care

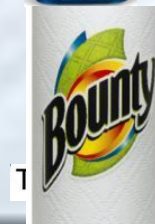


### Beauty & Grooming



### Health & Well-Being

### Household Care



**P&G**

Why “*rocket science*”?



For such  
everyday  
things?



Modeling  
& Simulation

The power to transform.

# Performance Contradictions...



## Materials ...

- strong but soft
- stretch not break,
- breath but contain,
- break...not tear.



## Packages ...

- creative design drives sales, but makes it harder to pack
- strong but light,
- never leak...but open easily.



# Performance Contradictions...

## Formulations ...

- protect fabrics ... but remove stains.
- Be compact, but used easily.



## Liquids ...

- mixtures can't separate,
- must dispense easily... but stay where applied.





# Scale: How to Sell \$1B



P&G makes billions of things...  
...and sell them for < \$10



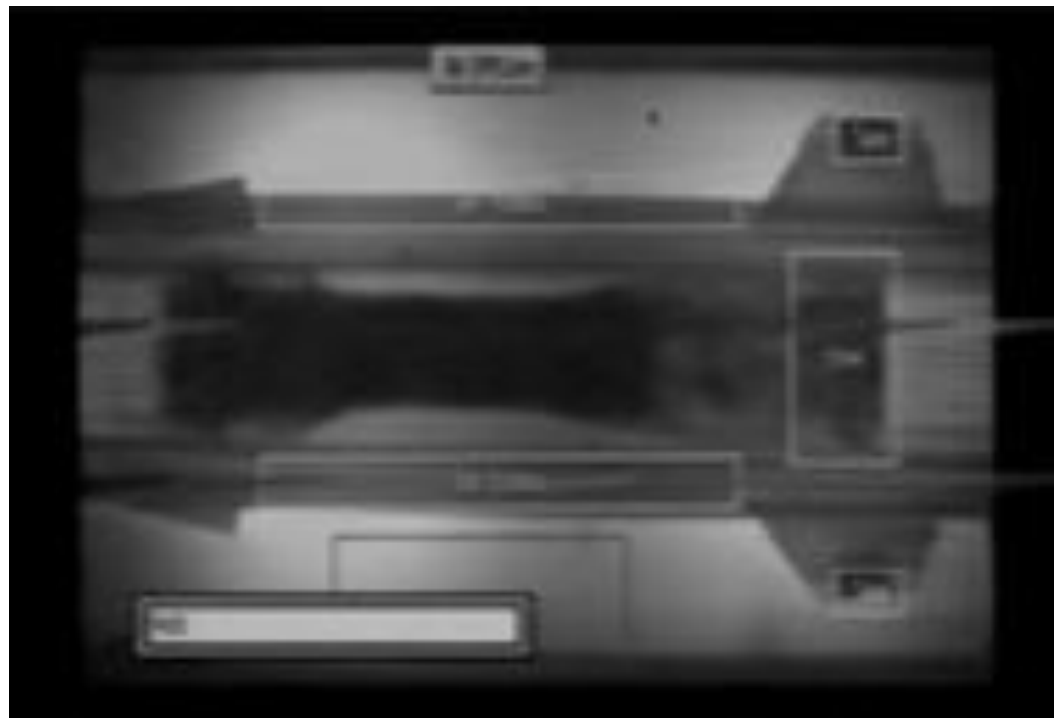
The power to transform.





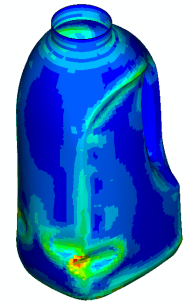
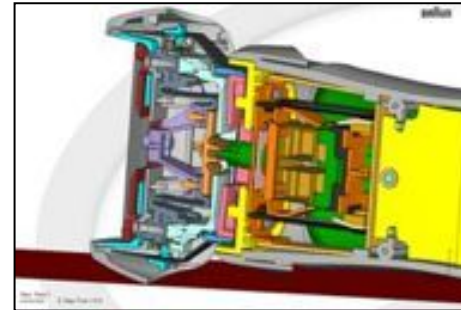
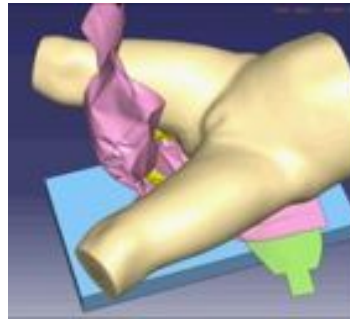
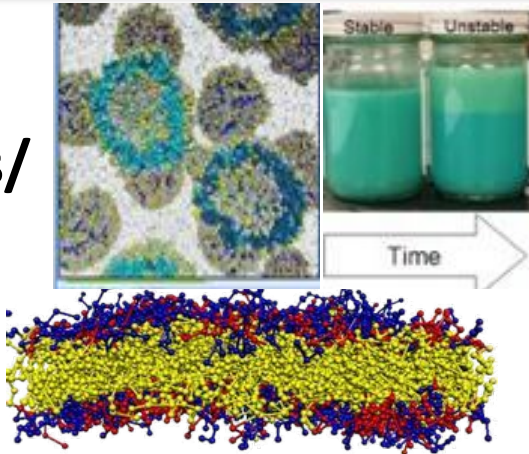
# Scale: Make a Billion Diapers...

How long does it take to make a billion Pampers?

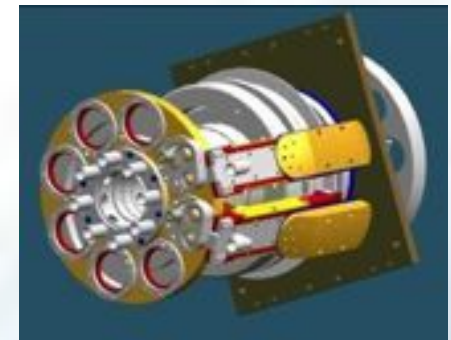
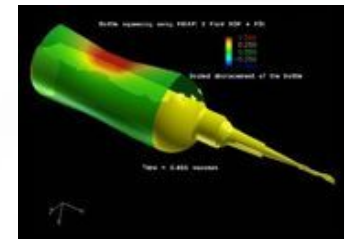
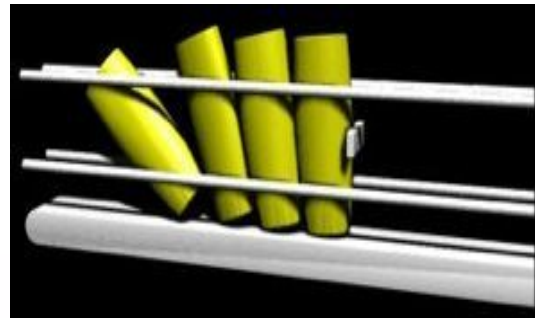
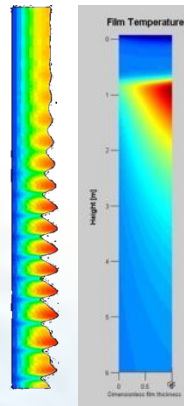
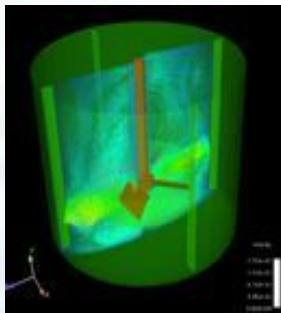


# ...Atoms to the Enterprise

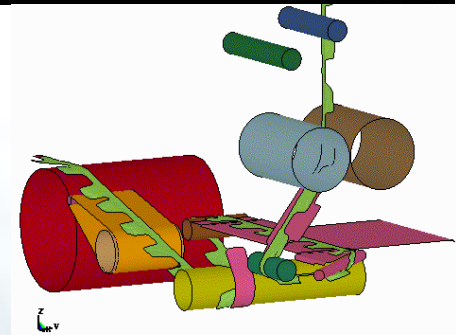
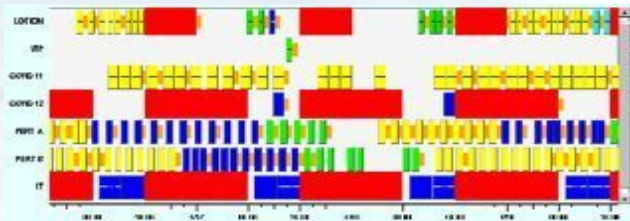
**Product/  
Materials/  
Device/  
Package**



**Process**



**Production  
Plan &  
Schedule,  
Reliability**



**Converting & Machines**



The power to transform.



# P&G & NITRD...

*Our Technical Challenges lead to collaboration with the best Scientists*

...Since 2009

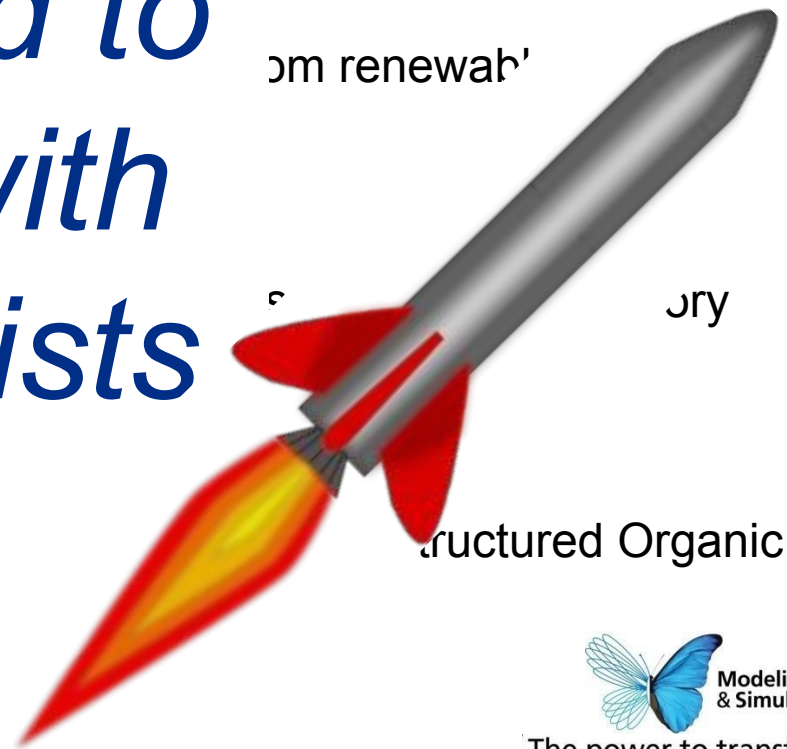
n of soft materials,  
ms

d Market Modeling  
Comp Chem

om renewab'

s jry

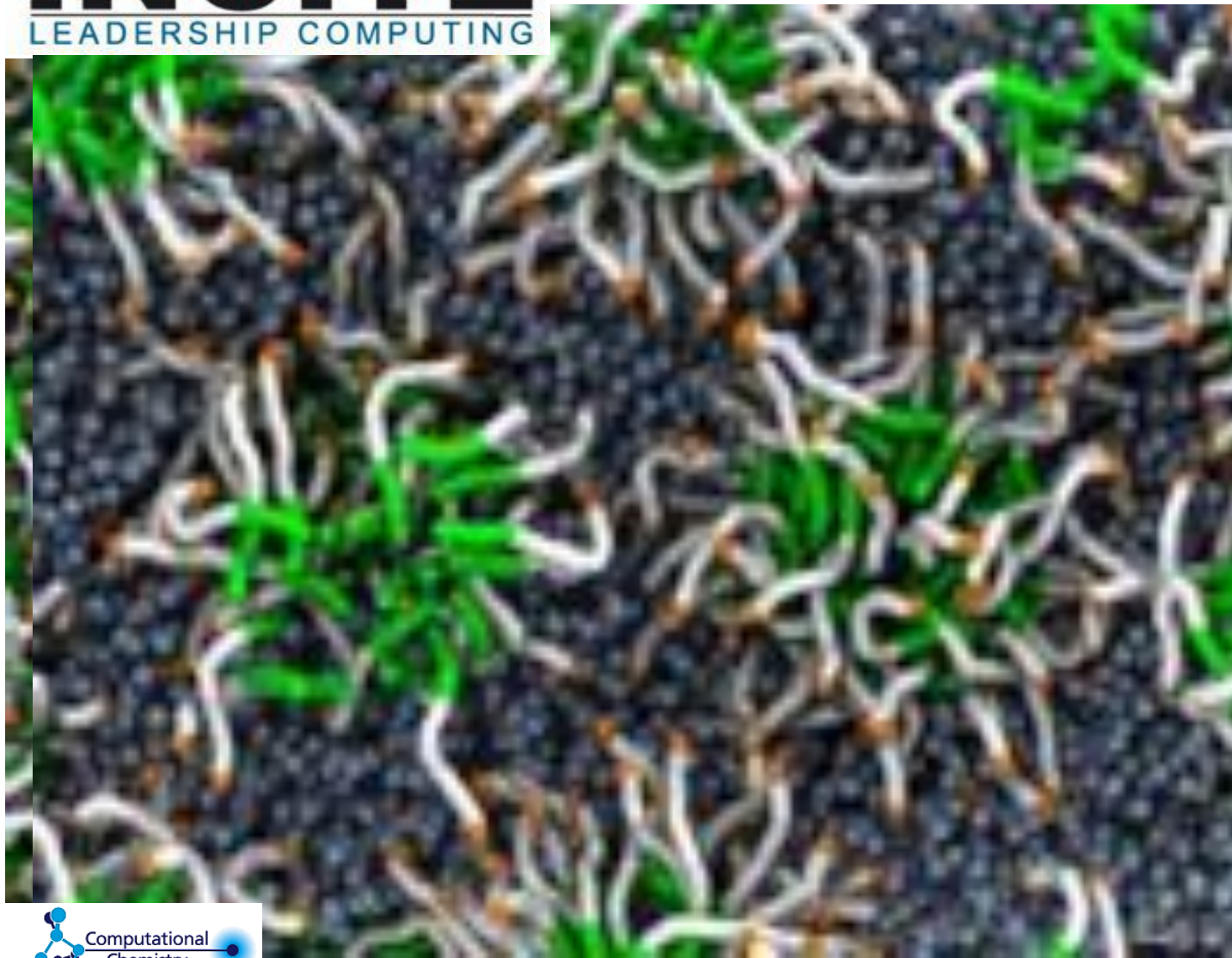
structured Organic



...since 2005



The power to transform.



Dr.  
Michael  
Klein,  
Temple  
University

“Coarse Grained  
Molecular  
Dynamics  
Studies of  
Vesicle  
Formation and  
Fusion”

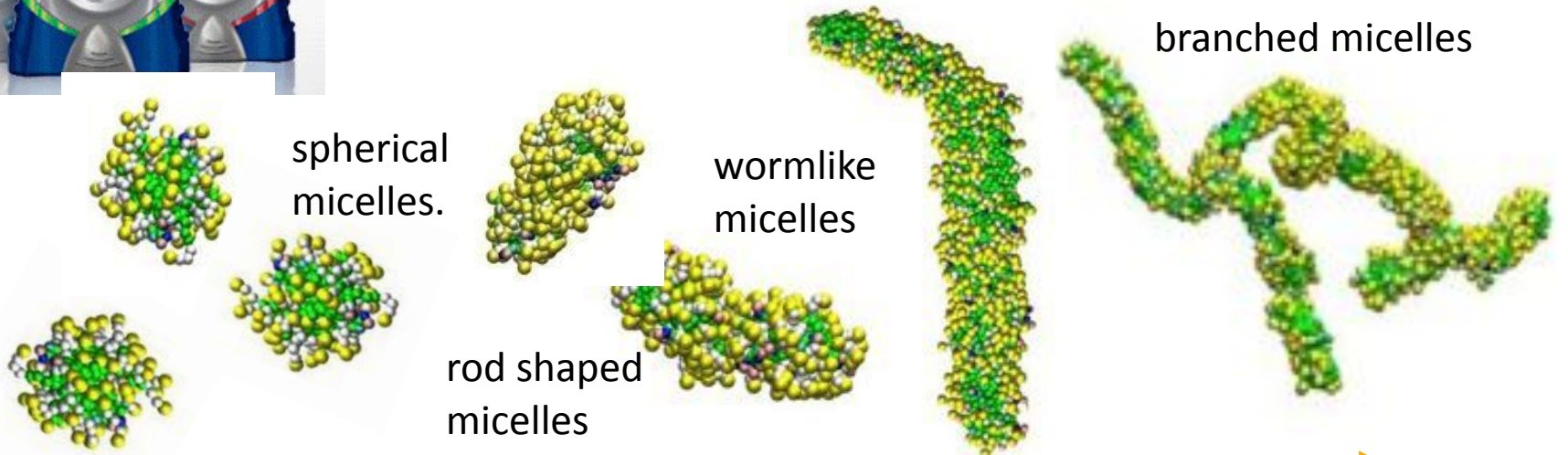


# Understanding Body Wash Formulations – Micelles!



Why are some formulations thicker (e.g. rheology)

at *different* concentrations?



# Solid Mechanics:

---

- **Rigid Body Kinematics**
  - **Finite Element Analysis (FEA):**
    - Implicit
    - Explicit
    - Linear
    - Non-linear
    - Massive Contact
    - Complex non-metal
- Material Models:** High Strain Rates 1/500 Seconds, Elastic-plastic, Hysterisis: Visco-Elastic, Visco-Plastic

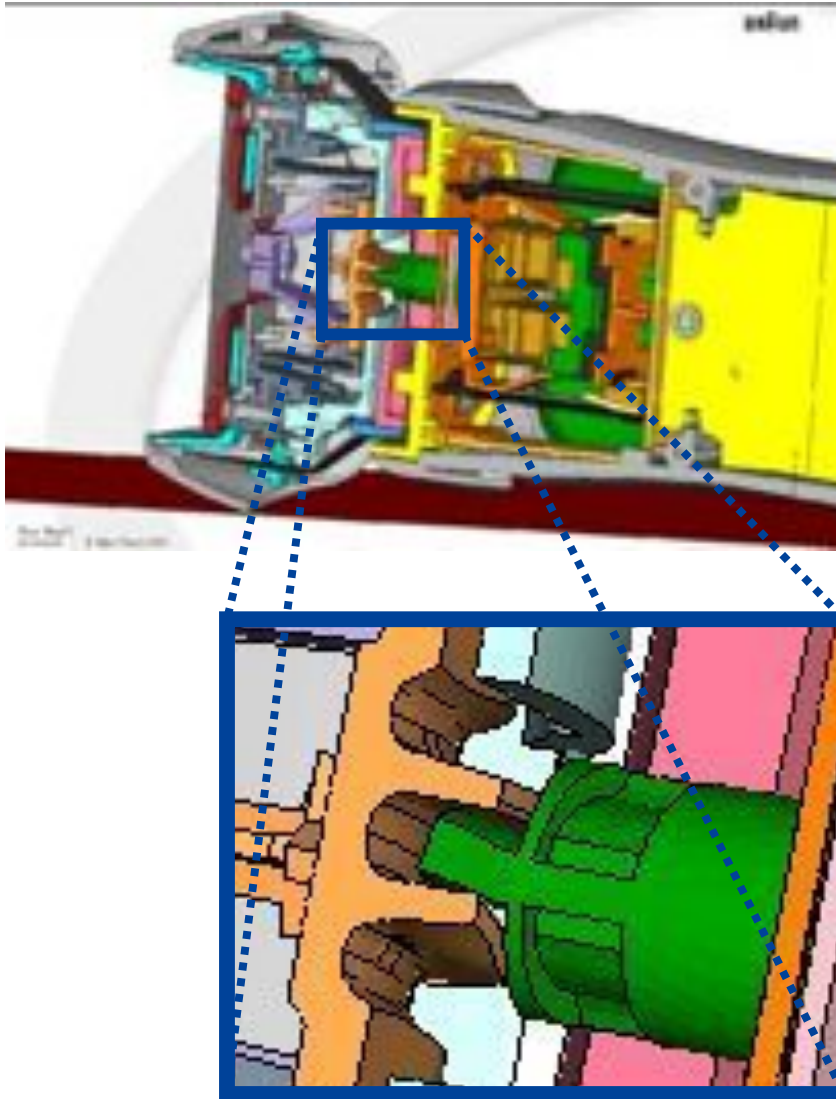




# The new premium shaver ...



# Bathroom Floor Drop



Lots of Small Parts...  
...Everyone must  
work!



- **Computational Fluid Dynamics (CFD):**
  - Free Surface Flow
  - Contained Turbulent Flow
  - Multi-Phase Flows
  - Creeping & Low Reynold's Number Flows
  - Non-Newtonian & Visco-Elastic Material Properties
  - Flow in Porous Media





# Mixing Non-Newtonian Fluids



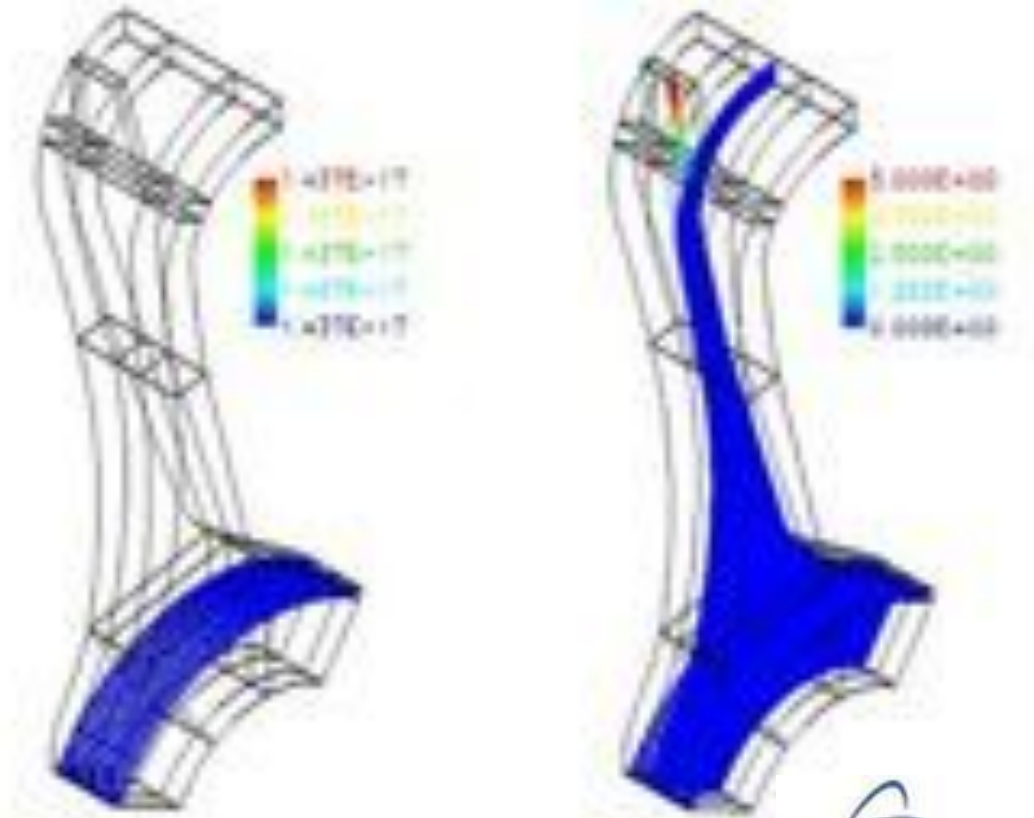


# Fluids: Making Absorbent Diapers

Multi-Phase  
Turbulence...  
w/ Material  
Accumulation  
At the  
Boundaries



Procter & Gamble © 2010



CFDlib w/ FLIP Markers  
(Bucky Kashiwa)  
@ Los Alamos National Labs

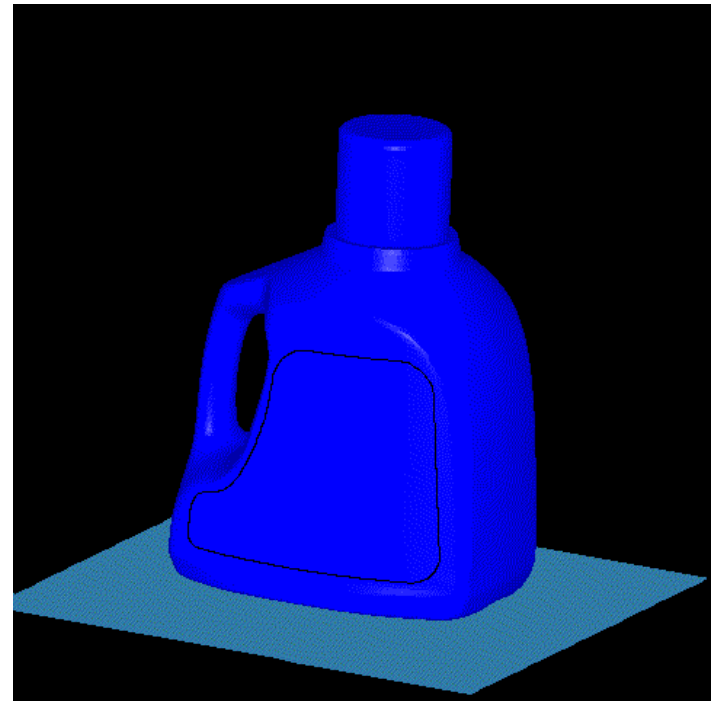


The power to transform.



# Bottle Drop Simulation

What You Don't Want to Happen In Store Or Your Laundry Room!





# Looking Ahead... Rehearse Reality!

---

- Tackle ‘Bigger’ more complex Problems more Completely
- Solve Larger equation sets...
- Do parametric studies(UQ) vs. point estimate Calculations
- ‘Turbo Tax<sup>®</sup>’ Complexity... Democratize Analysis to non-analysts